



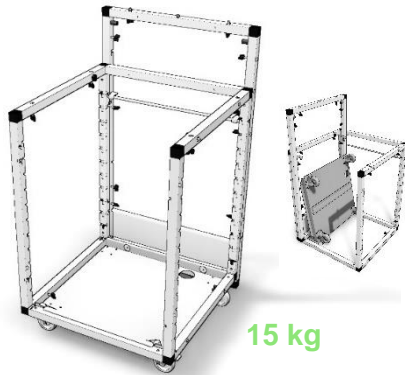
## FRONTBAR



THE MOBILE BAR SYSTEM FOR TRADE SHOWS,  
PROMOTION, AND HOSPITALITY.  
MODULAR. SUSTAINABLE. WELL-THOUGHT-OUT.



## G-Flexx or G-Raxx?



15 kg



15 kg

All frame types can be combined!



8 kg

### G-RAXX

G-Raxx basic modules are fixed frames with a width of 600 mm. The front frame supports the bartop and is hooked and secured into the frame. Without the front frame, G-Raxx can be used as a table module. For transport, the modules remain connected or are stacked on top of each other.

### G-FLEXX

The G-Flexx basic module is a foldable frame designed for minimal transport volume with a width of 1200 mm. With just a few simple steps, the basic modules can be compactly assembled into small packages to save space. G-Flexx frames already include the front frame that supports the bartop.

### G-FLEXX MINI

The basic module G-Flexx Mini is our smallest foldable basic frame. G-Flexx Mini can be used independently or to extend a bar or back wall by 600 mm.

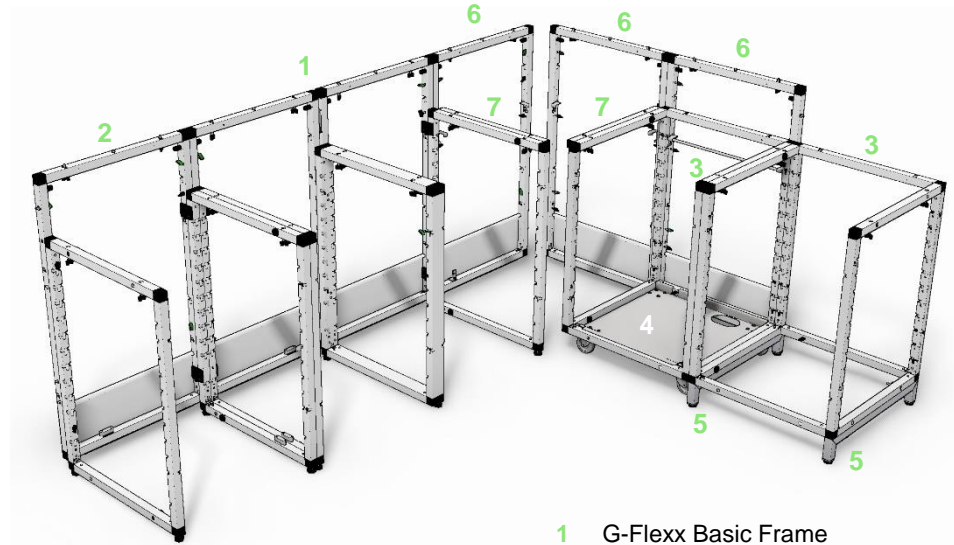
G-Flexx and G-Flexx Mini are available only with height-adjustable feet. G-Raxx modules can additionally be equipped with casters.



Modular  
Sustainable  
Durable

All G-Rack accessories are simply hooked, slid in, or fixed using integrated wing bolts. The assembly/disassembly of G-Rack modules requires no tools – with G-Rack there are no loose screws!

The basis of the bar is formed by the combinable basic frames: G-Flexx, G-Flexx Mini, or G-Raxx. For larger bar setups, basic frames can be connected tool-free via integrated screws. This allows you to configure bar counters in various sizes – even in U- or L-shapes – with just a few simple adjustments. G-Rack basic frames and accessory components enable size variations in increments of 600 mm. Various claddings and fittings allow for individual designs and functions.



- 1 G-Flexx Basic Frame
- 2 G-Flexx Mini Basic Frame
- 3 G-Raxx Basic Frame
- 4 G-Raxx Dolly Platform Base
- 5 G-Raxx Base Element
- 6 G-Raxx Front Frame
- 7 Adapter tubes

**Coulors & Branding**

Basic frames and worktops are always in black or white. Cladding parts, signs, and banners can be finished in different colors and with various brandings. By simply changing a few parts, the bar's branding and design can be altered.



05

06

07

08

09

10

11



Bars can also be configured in an L- or U-shape and feature sunken areas.

### **Bartops**

G-Rack bartops are available in various lengths. Rails underneath the bartop hold branding or lighting.

**Bartop accessory** shelves extend the bartop ergonomically toward the work area. LED lamps beneath the bartop illuminate the front or light up the work area.

**Accessories between the worktop and the bartop** – such as the quiver board and hanging shelves – create additional organizational levels above the worktop.

### **Worktops**

Various types of worktops allow for different workstation configurations. Worktops are fixed to the basic frame with 4 wing bolts, allowing them to be quickly exchanged and repositioned.

### **Accessories for worktops**

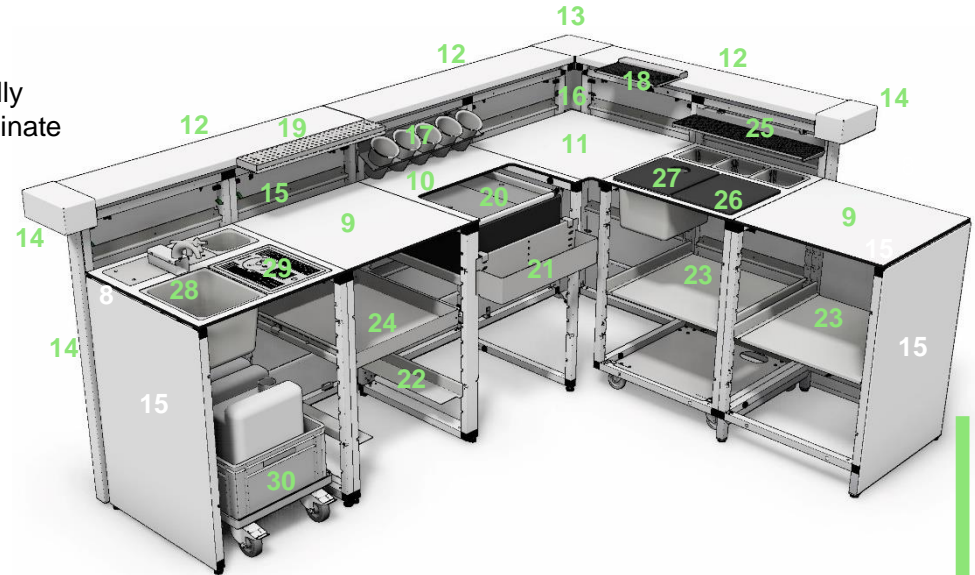
Cutouts in the worktops accommodate the G-Rack water station, GN containers, and other accessories.

### **Accessories in and on the frame**

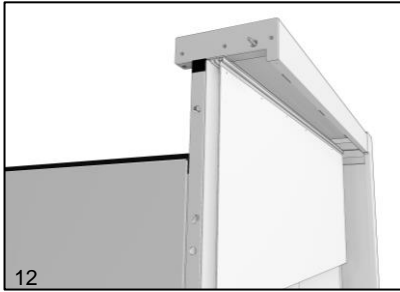
Speedracks can be installed laterally or along the work area. Drawers, shelves, or rails can be used to organize storage in the lower frames.

### **Claddings**

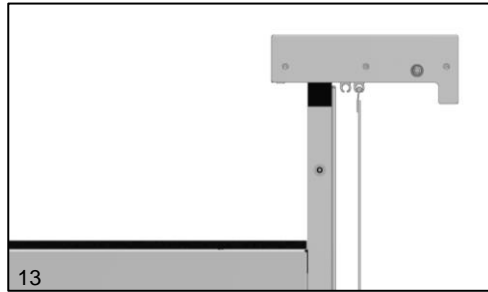
Front and side claddings cover the bar and enclose the basic frames. Side applications complete the bartop and the bar's sides. Corner profiles and corner caps form the corner of an angled bar.



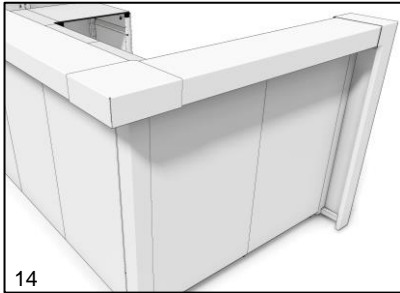
- |    |                            |    |                              |
|----|----------------------------|----|------------------------------|
| 8  | Worktop 2-2                | 20 | Ice box with sliding top set |
| 9  | Worktop 2-1                | 21 | Speedrack                    |
| 10 | Worktop 2-5                | 22 | Corner rails                 |
| 11 | Corner worktop             | 23 | Shelves set                  |
| 12 | Bartop 1200                | 24 | Slide drawer                 |
| 13 | Corner cap                 | 25 | Hook in tray                 |
| 14 | Side application 4 & 5     | 26 | Cutting board                |
| 15 | Front/side cladding        | 27 | Cutting board with opening   |
| 16 | Vertical corner rail       | 28 | Water station basic set      |
| 17 | Quiver board + quiver cups | 29 | Blender flusher              |
| 18 | Bartop tray                | 30 | Eurobox with dolly           |
| 19 | Bartop extension           |    |                              |



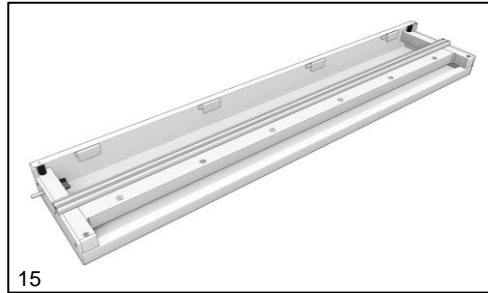
12



13



14



15

## Bartop

The bartop consists of an aluminum tube construction with a support made of powder-coated aluminum sheet. Standard bartop lengths are 600, 1200, and 1800 mm. The standard bartop depth is 235 mm. Bartops can be connected side-by-side. At the end of the bar, the bartop is framed by side applications, and in an angled setup, two bartops are connected by a corner cap. The underside of the bartop features threaded inserts for the fixing screws in the basic frames and 2 keder rails that hold banners or signs. At the lower front of the bartop, bracket mounts for LED lights illuminate the bar front.

### Customizing / Special Versions:

Bartops can also be manufactured in other lengths or depths and in different materials.

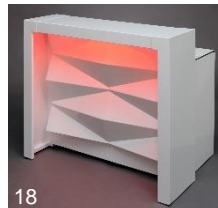
Bartop lengths determine the possible sizes of the bar. A 180 cm bartop allows for a 180 cm wide bar setup. A combination of a 60 cm + 120 cm bartop makes 60 cm / 120 cm / 180 cm wide setups possible.



16



17



18



19



20



21



22

**Bartop Accessories** Shelves extend the bartop ergonomically toward the work area.

**The bartop tray** is clamped onto the bartop and can be shifted laterally. Part of it rests on the bartop while part extends over the worktop, ergonomically reducing the distance to the bartop level. 2-piece, Material: polished stainless steel / rubber  
Dimensions (W x D): 315 x 206 mm.

**The Bartop Extension** is clamped between 2 basic frame axes on the bartop, is flush with the bartop surface, and stands over the work area. 3-piece, Material: holder made of powder-coated aluminum, tray of stainless steel, drip tray of stainless steel,  
Dimensions (W x D): 600 x 100 mm.

**The Worktop Light** is inserted into the underside of the bartop and illuminates part of the work area, Length: 280 mm.  
It cannot be combined with the Bartop Extension.

**The LED-RGB light strip** is hung beneath the bartop. The included remote control enables color changes within the RGB range. This dimmable RGB light strip is available for bartops with widths of 600 and 1200 mm.

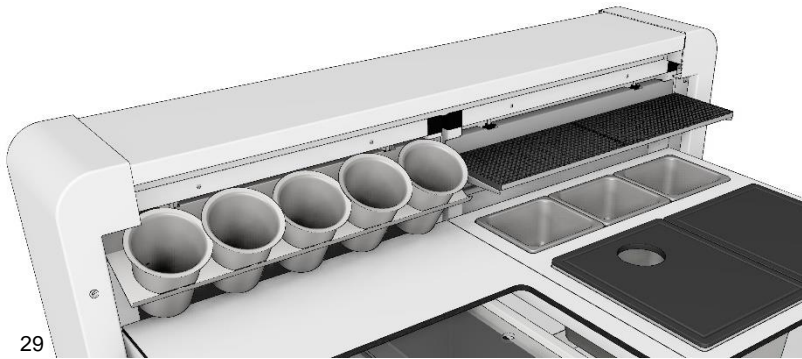
**The LED light strip** is a warm-white front lighting that is not dimmable. It is hung beneath the bartop and is available for bartops with widths of 600 and 1200 mm.

**Banners and signs** are slid into keder rails mounted on the underside of the bartop. More on this in the “Branding” chapter.



## Accessories between Worktop and Bartop

These take small items and provide additional organization above the worktop.



**The Quiver Board** is hung on attachment points on the basic frames and accommodates up to 5 stainless steel quivers. These quivers hold various small items. Stirrers, straws, fruits, herbs, or bartools are thus well organized and always quickly accessible. Multi-piece, Material: stainless steel (quiver cup polished)  
Dimensions (W x D x H): 533 x 115 x 93 mm.

**The Hanging Shelf** creates extra organizational space above the worktop. On the stainless steel shelf with a rubber mat, various bartools can be placed or laid down. Material: stainless steel / rubber mat  
Dimensions (W x D): 600 x 160 mm.

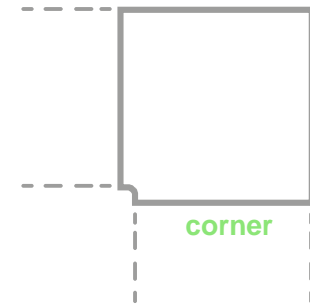
The smaller the bar, the more useful additional organizational levels are for the work area.



Worktops can be quickly repositioned. 600 x 600 mm worktops offer maximum flexibility!

## Plans de travail / Worktops

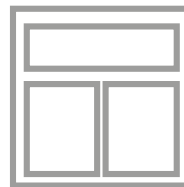
Various worktops allow for different workstation configurations. Material: HPL 10 mm, black or white, fire-resistant B1 quality – hygienic, highly durable, impact- and water-resistant. The underside of the worktops has threaded inserts for the fixing screws in the basic frames. Standard formats: 600 x 600 mm or 1200 x 600 mm, and 650 x 650 mm for the corner worktop. Cutouts in the worktops accommodate accessories such as the water station, cutting boards, and GN containers. Openings in the worktops allow access to accessories in the frame. Custom dimensions and special cutouts are possible on short notice. Custom colors are also possible with longer lead times.



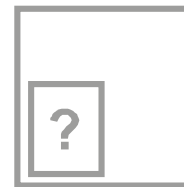
1-1



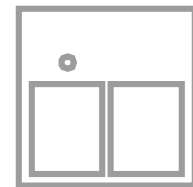
2-1



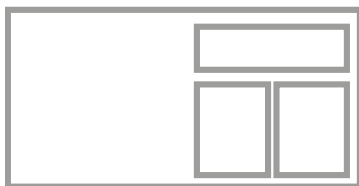
2-2



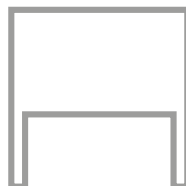
2-3



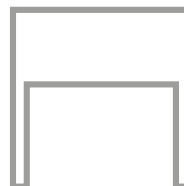
2-3



1-3



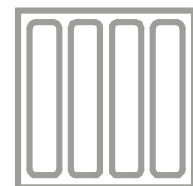
2-4



2-5



2-9



2-6



## Accessories for worktops

Water stations, cutting boards, and GN containers are integrated into cutouts in the worktops. Openings in the worktops enable access to accessories in the underlying frame.



## Accessoires dans et sur la structure

Les Speedracks peuvent être installés sur les côtés ou à l'avant de la structure de base.

Avec des tiroirs, des étagères ou des supports d'étagère, l'espace de rangement dans les structures inférieures peut être organisé.

Les éléments sont réglables en hauteur par paliers de 58 mm.

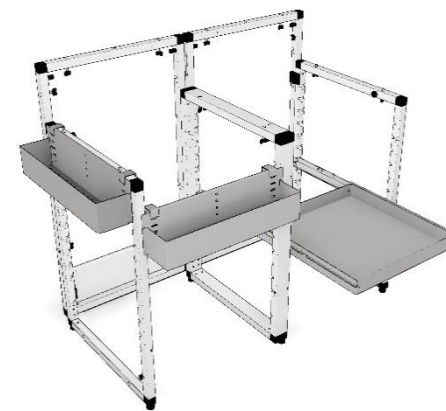
Le kit d'étagères se compose de 2 supports d'étagère et d'une étagère en acier inoxydable. Les supports d'étagère peuvent également porter des paniers à verres sans l'étagère.

Les tiroirs à extension complète accueillent des petits objets ou des paniers à verres de 500 x 500 mm et supportent jusqu'à 50 kg.

Les glacières, avec ou sans ensemble de couvercles coulissants, peuvent être installées dans les tiroirs ou posées sur les étagères.



37: Shelves set (Item-no. xx-zb7.8)  
Corner rails (Item-no. xx-zb7)



38: Speedrack (Item-no. xx-zb10)  
Drawer (Item-no. xx-zb5.1)



39: Ice box with sliding top set  
(Item-no. xx-zb14.2)



40: Ice box with sliding top set  
(Item-no. xx-zb14.2)

## Accessoires dans et sur la structure

Speedrack (44, 45)

Drawer (42, 43)

Shelves set (41, 43, 45)

Corner rails (41, 44)





## Claddings

Front / Side / Rear

•**Front/side cladding** Format: Height 860 mm, Width 600 mm. **Material: powder-coated aluminum.** Rear stainless steel hanging rails enable attachment to G-Rack basic frames. **Standard colors are Black RAL 9005 and White RAL 9016.** Over 200 additional colors according to RAL Classic are available. The claddings can be partially finished with plot films or completely with printed films, or even be manufactured from other materials.

The lower **side/front cladding** can enclose G-Rack modules **on all 4 sides.**

When used for the elevated bar front, the base of the basic frame remains visible. This cladding creates the possibility of color contrasts between the cladding and the base at the front.





## Claddings Front

### Front Cladding

**Dimension: Height 1040 mm, Width 600 mm.**

**Material: powder-coated aluminum.** Rear stainless steel hanging rails enable attachment to G-Rack basic frames.

**Standard colors are Black RAL 9005 and White RAL 9016.**

Over 200 additional colors according to RAL Classic are available. The claddings can be partially finished with plot films or completely with printed films, or produced from other materials.

The higher **front cladding** can only be used **on the elevated bar front** and also covers the base of the basic frame. This enables a complete color change of the bar front without a contrasting base – without the joint to the base, the effect is somewhat more understated, and the branding and motifs extend to the floor.

With the higher front claddings, the color of the basic frame becomes irrelevant because the base plate at the front is completely concealed.



## Claddings

### Side applications

The side applications complete the bartop and the side of the basic frame at the end of the bar. Side applications 1, 2, and 3 extend down to the floor and are positioned in front of the bar front to the same extent as the bartop.

Visually, this creates a frame around the bar front. The side apps 1-3 further enhance the stability of the bar.

Side application 4 is a cap that covers the end of the bartop. Side app 5 is a tube that conceals connection screws and drill holes on the side of the basic frame.

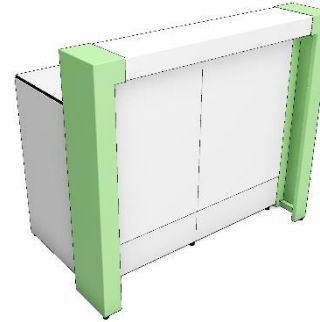
The combination of side apps 4+5 is required when there is a flush transition from the elevated bar front to the worktop level in the bar front.

Side apps 4 and 5 can remain on the bartop and basic frame during transport. Using different colors for the side apps creates interesting color accents on the bar cladding.

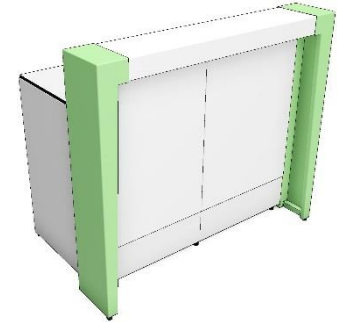
**Material: powder-coated aluminum.** Integrated threads allow for secure fastening in G-Rack basic frames.

**Standard colors are Black RAL 9005 and White RAL**

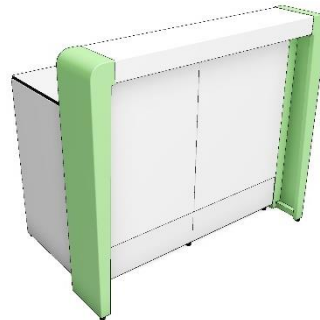
**9016.** Over 200 additional colors according to RAL Classic are available. Side apps 4+5 can also be manufactured from stainless steel or brass.



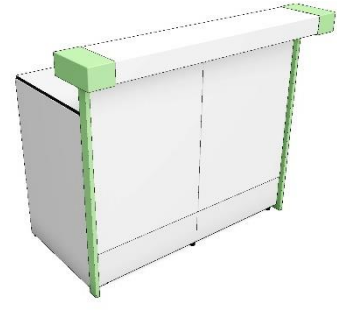
56: **Side application 1**  
angular top connection,  
straight run downwards  
(Item-no. 09, 11, 18, 20, 47,  
53, 62, 68, 72, 73, 76, 78, 83)



57: **Side application 2**  
angular upper connection,  
tapered downwards  
(Item-no. 07, 16, 28, 60, 67,  
68, 72, 74)



58: **Side application 3**  
round top connection,  
tapered downwards  
Item-No. 21, 46, 63, 65, 70)



59: **Side application 4**  
square end cap on the bartop  
**Side application 5**  
rectangular tube on frame side  
(Item-no. 26, 45, 50, 51, 52, 54, 55,  
61, 64, 65, 66)

## Claddings

### Side applications



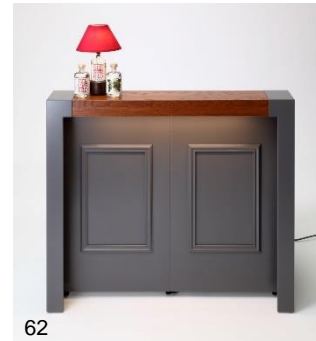
60

Side application 2



61

Side application 4 & 5



62

Side application 1



63

Side application 3



64

Side application 4 & 5, stainless steel polished



65

Side application 3 (left), 4 & 5 (right)



66

Side application 4 & 5

## Brandings

### Banners, Signs, Films

G-Rack bartops feature keder rails on the underside into which **banners or signs** can be inserted with just a few steps. A banner or sign can always be **centered on the bar front**, even when the bar size changes.

Banners are compactly rolled, practical, and easy to handle. At the top, the banner is held in the keder rail under the bartop, while at the bottom, a tension bar in the hem secures the banner. A slight wrinkling is inevitable.

The two keder rails under the bartop also allow for multiple front/branding levels.



68



67



69



## Brandings Banners, Signs, Films

G-Rack front/side claddings and front claddings can be partially finished with plot films or completely with printed films. When branding front claddings, the varying bar widths must always be taken into account.

If various brandings are only needed on a one-off basis, it is recommended to use signs with digital film. For the next use, simply change the film on the sign.

Signs made from aluminum dibond, Makrolon, or integral foam panels can be used on both sides and have a more substantial visual impact than banners. Many different sizes are available. Modular sign sets for varying bar widths are also possible.



## Customization



Special solutions are possible for virtually everything, but we always recommend thinking modularly here as well. By sticking to the system's basic dimensions, the entire G-Rack equipment portfolio remains usable. Individually developed designs for cladding elements allow you a completely unique appearance without sacrificing the advantages and functions of the G-Rack system. Cladding parts can be customized. Special coatings, films, acrylic panels or mineral materials, moss or real wood, textiles and leather, ceramics or metal – with materials there are few limits, though certain uses may have restrictions. We are happy to provide individual advice.





# YOU HAVE A QUESTION ?

## Contact

**Kay Muhlack**

📞 **(+49) 431 – 648 06 0**

✉ **info@g-rack.de**

## IMAGE SOURCES

- p 1: Baractif
- p. 2: Christoph Edelhoff (2, 3, 4)
- p. 3: Christoph Edelhoff (5, 6, 7, 8, 9, 10, 11)
- p. 5: Christoph Edelhoff (16, 17, 18, 19, 20, 21, 22)
- p. 6: Christoph Edelhoff (23, 24, 25, 26, 27, 28)
- p. 7: Christoph Edelhoff (30,31)
- p. 9: Christoph Edelhoff (32, 33, 34, 36); Rémur Sébastopolis, Le Bar Paris (35)
- p 10: Christoph Edelhoff (39, 40)
- p.11: Christoph Edelhoff (41, 42, 43, 44, 45)
- p.12: Tumbler Cocktails (46); Christoph Edelhoff (48, 49, 50)
- p.13: Rémur Sébastopolis, Le Bar Paris (51); Barson Barcatering (52, 55); Joey Timmann (53); Christoph Edelhoff (54)
- p.15: Christoph Edelhoff (60, 62, 63, 64, 65)
- p.16: Christoph Edelhoff (67, 68, 69)
- p.17: Christoph Edelhoff (70, 71, 72); One Bar Group (73)
- p.18: Rémur Sébastopolis, Le Bar Paris (75, 80); Christoph Edelhoff (76, 82); Maison Villvert (77); One Bar Group (78, 79, 83); Palmer Wine AS (81)

