



THE MOBILE BAR SYSTEM FOR TRADE FAIRS; PROMOTION AND HOSPITALITY.
MODULAR. SUSTAINABLE. SOPHISTICATED:

Modular
Sustainable
Durable

Self-standing Back Wall

The foundation of the back wall consists of backframe base feet (2), to which the backframes (3) are attached without tools. Backframes can be connected vertically and horizontally to create larger back wall surfaces. Various claddings and presentation surfaces allow for individual designs.

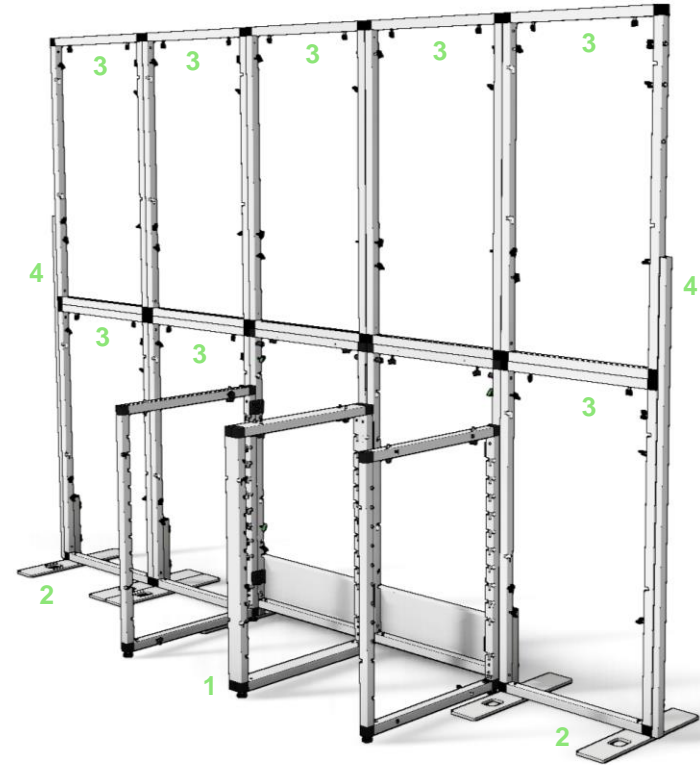
Two back frames mounted on top of each other form an area of 600 mm x 2170 mm.

The width of G-Rack back walls can be adjusted in increments of 600 mm.

On the sides, the back wall side application (4) finishes the back wall and connects the upper and lower backframes.

Back wall assembly on base frames

To construct a back wall with storage space, back wall frames are mounted on G-Rack baseframes (1).



- 1 G-Flex Baseframe
- 2 Backframe Base
- 3 Backframe
- 4 Side Application



Back Wall Claddings

Back wall claddings (5,6) are attached to the back frames without tools before assembling the back wall.

Presentation Surfaces/Shelves

Attachment points in the claddings hold the illuminated presentation surfaces (8,9).

An additional illuminated presentation surface can be inserted on the worktop of the base frames (12).

Frame Claddings

The base frame cover (7) closes the gap between the worktop and the back wall frame.

The storage space in the base frames is concealed by side/front claddings (17) or G-Rack sliding doors (18).

Canopy/Lamp Frame

Two lamp arms are mounted on the back of the back wall frames. The lamp arms support a level from which lamps can be suspended.

Side Banners

Banners (11) up to 80 cm wide can be inserted on the sides of the back wall.

Banners can also be inserted between back wall elements.

Branding

Banners and claddings can be printed.

The branded brand sign (14) can be hung at the top of the back wall.

Packaging

The back frames with claddings are packed in padded bags.

One bag holds 2 back wall frames with up to 4 claddings.

Packaging bags are also available for other parts.



- 5 Cover without milling
- 6 Cover with milling
- 7 Frame Cover
- 8 Backframe Shelf
- 9 Bottle Shel
- 10 Banner Holder
- 11 Side Banner
- 12 Elevated Bottle Shelf
- 13 Brand Sign 600 x 400
- 14 Brand Sign 600 x 230
- 15 Lamp Frame 1200
- 16 Work Top
- 17 Front/Side Panel
- 18 Sliding Door Set



Back wall cladding
without milling
(Item-no. xx-bfc1-)



Back wall cladding
with milling
(Item-no. xx-bfc2-)

Bottle shelf
(Item-no. xx-bs-)



Back wall cladding
with milling
(Item-no. xx-bfc2-)

Backframe shelf
(Item-no. xx-bfs2-)

Bottle shelf
(Item-no. xx-bs-)



Back wall cladding
with milling
(Art.-Nr. xx-bfc2-)

Bottle shelf
(Item-no. xx-bs-)



Back wall cladding
with milling
(Item-no. xx-bfc2-)

Backframe shelf
(Item-no. xx-bfs2-)

Back Wall Claddings

Material: Aluminum 1.5 mm, powder-coated.

For transport and assembly, the claddings remain attached to the back frames.

Back wall claddings can be changed when the back wall needs different colors, presentation surfaces, or branding.

Attachment points in the claddings allow for tool-free installation of illuminated back wall shelves and bottle shelves.

As standard, there are predefined grids for the placement of presentation surfaces at the attachment points, but other grids can be produced upon request.

Standard colors for cladding panels: Black RAL 9005, White RAL 9016.

Special colors according to RAL classic possible, vinyl plotting or lamination with digitally printed films possible.

Packaging

The back frames with claddings are packed in padded bags (Item-no. xx-bag8).

One bag holds 2 back wall frames with up to 4 claddings or up to 8 claddings without frames.

Backframe Shelf

(Item-no. xx-bfs2-)

Material: Aluminum, powder-coated.

Box-shaped shelf with warm white 230V LED lighting directed inwards and upwards.

External dimensions: W x H x D = 390 x 350 x 120 mm

Internal dimensions: W x H x D = 330 x 290 x 120 mm

Standard colors for frame and back panel: Black RAL 9005, White RAL 9016.

Custom RAL colors available for shelf frame and back panel. Attached to mounting points of the back wall paneling without tools.

Position: in the upper half of the back wall paneling

Packaging option: Bag 7, Item-no. xx-bag7



03



04



05



06



07

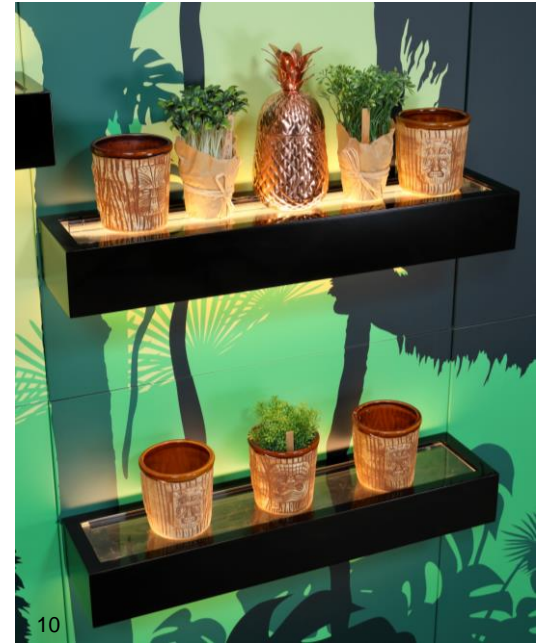


08

Bottle Shelf

(Item-no. xx-bs-)

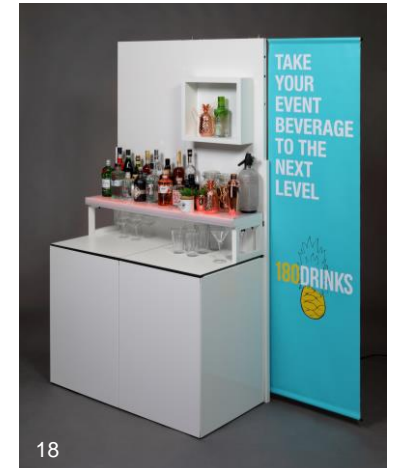
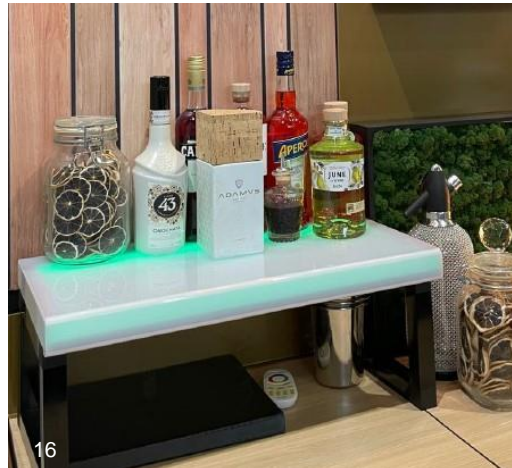
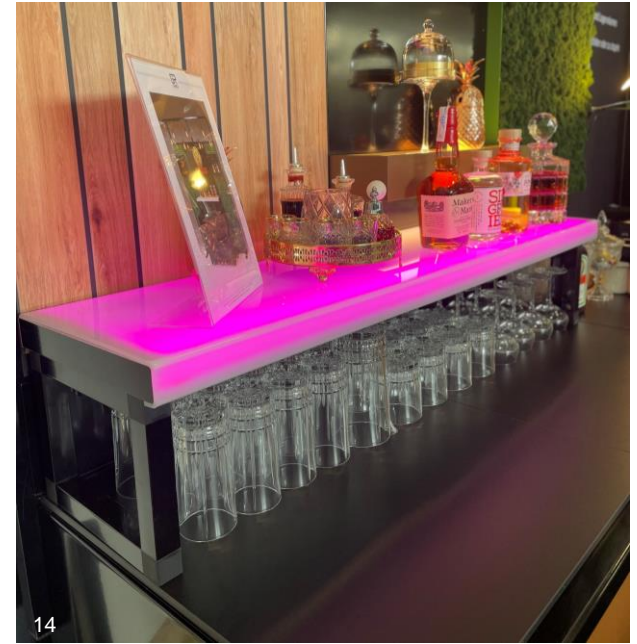
Material: Aluminum, powder-coated, and polycarbonate.
Shelf with transparent polycarbonate surface, featuring warm white 230V LED lighting directed upwards and downwards.
External dimensions: W x H x D = 596 x 80 x 140 mm
Standard colors for bottle shelf: Black RAL 9005,
White RAL 9016.
Custom RAL colors available.
Attached to mounting points of the back wall paneling without tools.
Position: up to 3 bottle shelves possible per back wall panel
Packaging option: Bag 7, Item-no. xx-bag7



Elevated bottle shelf

60 cm (Item-no. xx-ebs-600-)
120 cm (Item-no. xx-ebs-1200-)

Material: Aluminum, powder-coated, and polycarbonate.
Presentation surface with illuminated top plate made of polycarbonate.
External dimensions: W x H x D = 600 x 252 x 300 mm and
1200 x 252 x 300 mm
3-piece design, with 2 tool-free attached standing frames
Top surface illuminated by RGB LEDs.
Light can be synchronized with LED lights of the bar front.
Standard colors for top surface: milky white
Standard colors for standing frames: Black RAL 9005, White RAL 9016.
Packaging option: Bag 5, Item-no. xx-bag5



Frame Covers

Frame Covers

Material: Aluminum, powder-coated

The gap between the worktop and the back wall frame can be closed with the "Base Frame Cover" Item-no. xx-fc-.

Material: Aluminum, powder-coated, H x W = 600 x 200 mm

Packaging option: Bag 10, Item-no. xx-bag10

The storage space in the base frames can be enclosed with front/side panels Item-no. xx-sc-.

Material: Aluminum, powder-coated, H x W = 600 x 860 mm

Packaging option: Bag 3 Item-no. xx-bag3

For quick and frequent access to the storage space, we recommend our sliding door set Item-no. fx-sd- (G-Flexx) and rx-sd- (G-Raxx).

Material: Aluminum, powder-coated, PVC. W x H = 1200 x 786 mm

Packaging option: Bag 5, Item-no. xx-bag5 and Bag 7, Item-no. xx-bag7

The Sliding door set is also available with lock.



sliding door set

base frame cover

front/side panel

Canopy/Lamp Frame

Canopy/Lamp Frame Item-no. xx-bfff-1200-

Material: Aluminum, powder-coated.

Standard colors for lamp arms and level: Black RAL 9005,
White RAL 9016.

Custom RAL colors possible for the level.

2 lamp arms are mounted on the back of the back wall frames.

The lamp arms support a level from which lamps can be
suspended.

The frame can be mounted at 2 different heights.

Packaging option: Bag 5, Item-no. xx-bag5

Width = 1200mm.



Branding

Coverings can be fully laminated with printed foils or receive vinyl plots.

The branded "brand sign" can be hung at the top of the back wall.

Brand Sign

Material: Aluminum, powder-coated.

W x H = 600 x 400 mm (Item-no. xx-bfbs1-)

and 600 x 230 mm (Item-no. xx-bfbs3-)

Standard colors: Black RAL 9005,

White RAL 9016.

Custom RAL classic colors possible.

Vinyl plot or complete foil lamination

possible.



Side Banner

PVC tarpaulin, digitally printed, B1 (according to DIN 4102-1, DIN EN 13501)

Width 600 mm (Item-no. xx-bb1-600) or

Width 800 mm (Item-no. xx-bb1-800)

Banners up to 80 cm wide can be used on the far left and right of the back wall.

A banner holder (Item-no. xx-bfbh) is necessary for mounting.

For self-standing back walls, banners can also be used between back wall elements to cover larger spans.



25



26



27

DO YOU HAVE ANY QUESTIONS ?

Contact

Kay Muhlack

📞 **(+49) 431 – 648 06 0**

✉ **info@g-rack.de**

IMAGE SOURCES

- p. 2: Christoph Edelhoff
- p. 5: Christoph Edelhoff (3, 4, 5, 7, 8)
- p. 6: Christoph Edelhoff (9, 10, 13), Gebr. J. & M. Ziegler GmbH (12)
- p. 7: Christoph Edelhoff (15, 17, 18)
- p. 8: Christoph Edelhoff (19)
- p. 9: Christoph Edelhoff (20, 21, 23)
- p.10: Christoph Edelhoff (25, 26), Sebastian Weimar (27)

